

# How to choose a career

Penny Longman  
Careers Consultant  
30 Sept 2020

LONDON  
SCHOOL of  
HYGIENE  
& TROPICAL  
MEDICINE



# Forthcoming events

## This week's recorded sessions:

Career options that use your master's

Careers using your research skills (outside academia)

## Next week

**Getting into Management Consultancy** - Tuesday 6 Oct, 10-10.45 am

**Getting into Management Consultancy** - Wed 7 Oct, 3.30-4.15 pm

**UCL Management Consultancy Careers Fair** - Tuesday 6 Oct, 5.00-8.00 pm

## Recorded sessions

Amira El-Houderi alumna talk (Amira works for EY)

Natalie Moyen alumna talk (Natalie works for Mott Macdonald, Fleming Fund, as their One Health Coordinator)

Costello Medical employer talk

Options employer talk (consultancy subsidiary of Marie Stopes International)

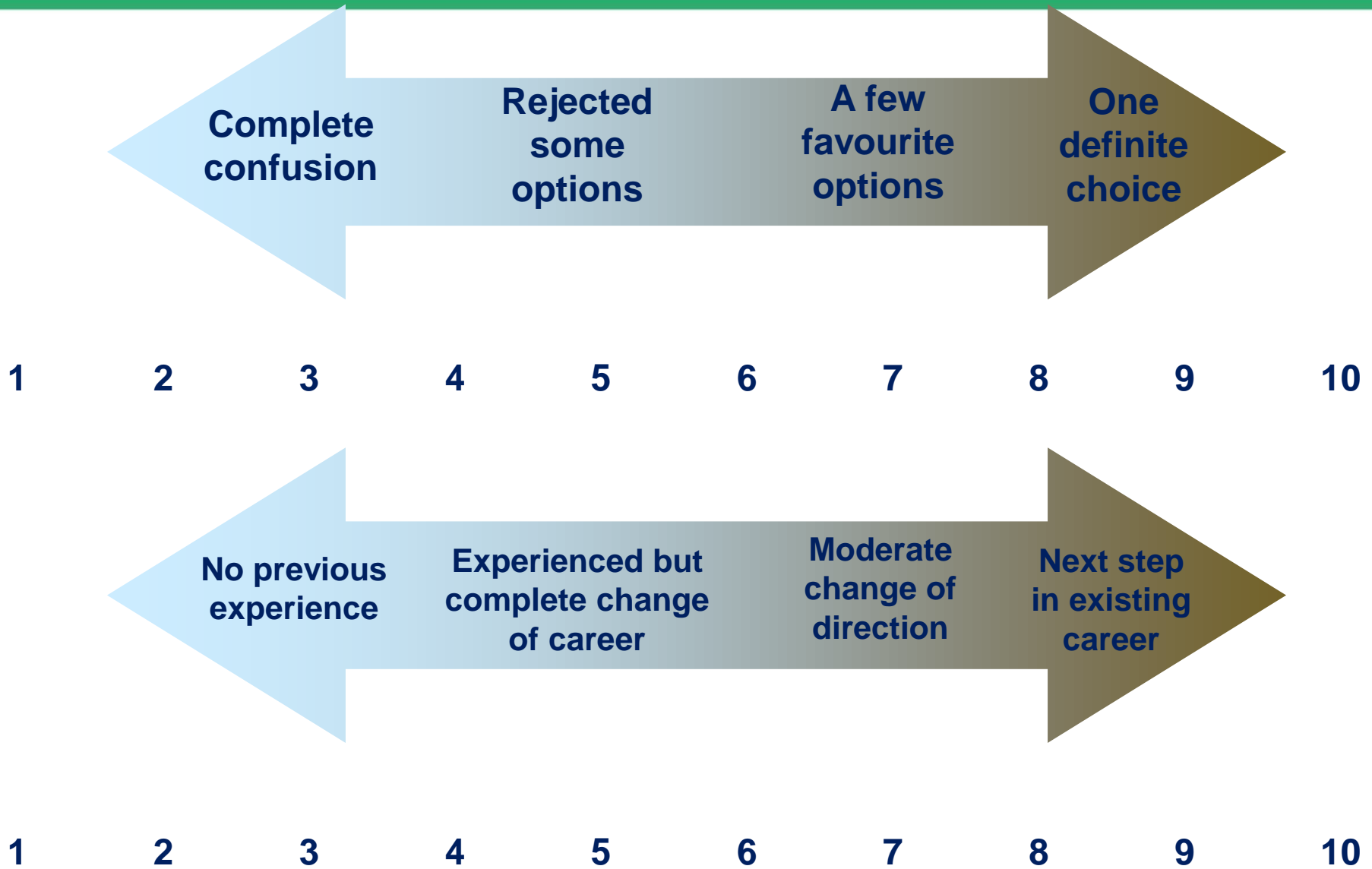
[All details and sign up links are on Moodle here](#)

Aim: to equip you with reflective career decision-making tools

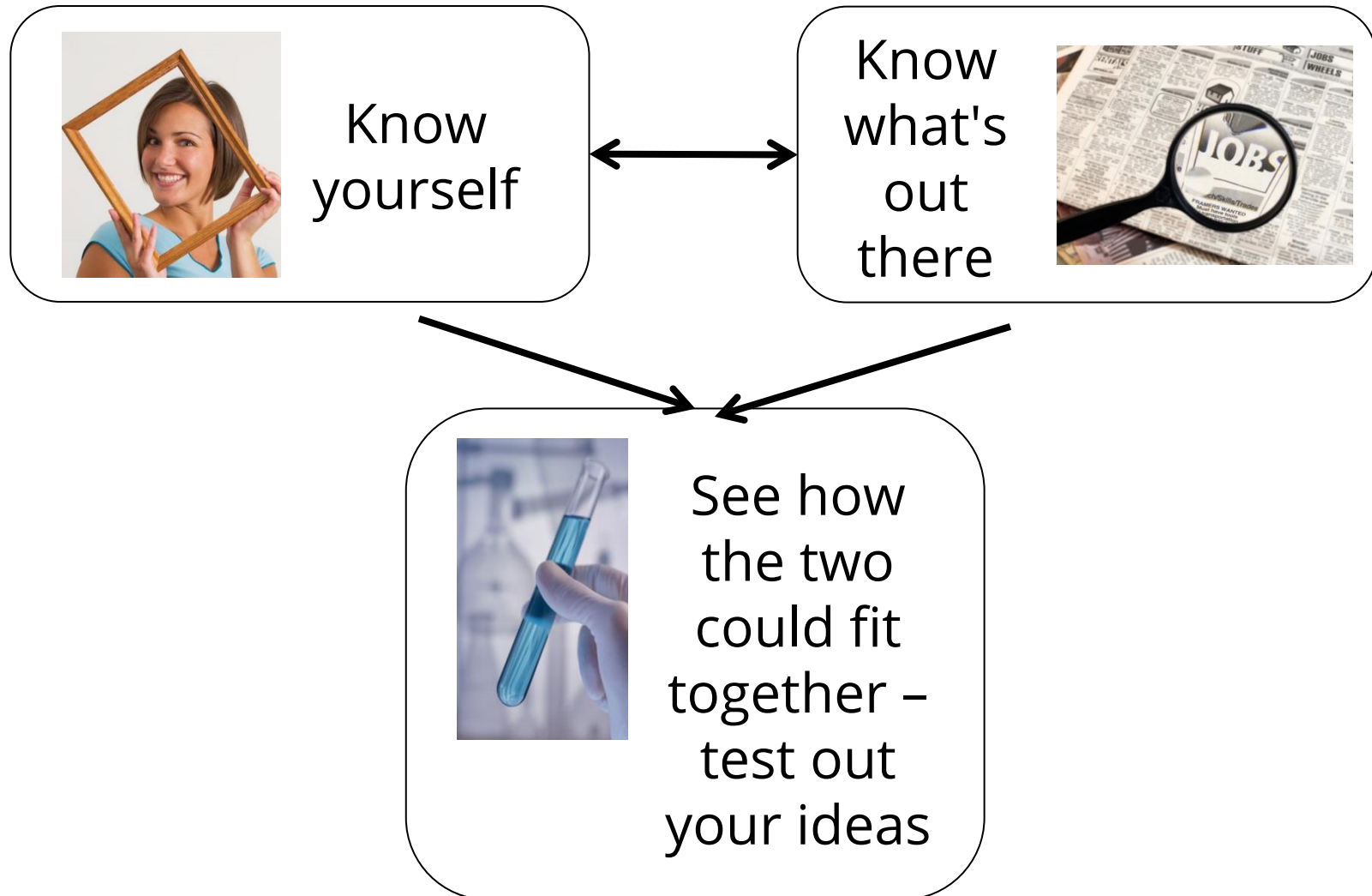
Objectives: by the end of the session you will be able to

- Identify priorities for your next step
- Evaluate possible career options in the light of those priorities
- Formulate a plan for one action as a next step

# Where are you now?



# Making careers decisions



# What drives your career choices

Development  
Impact  
Research  
Location  
Hands-on  
Flexibility  
Autonomy  
Work-life balance  
Learning  
Money  
Problem solving  
Risks  
Options  
Skills  
Success rate  
Challenge  
Prestige  
Creativity  
Collaboration  
Security  
Stress  
Knowledge  
Fun  
Competition  
Variety  
Resources  
Expertise  
Predictability  
Breadth  
Colleagues  
Particular topic  
Particular region

After the session, try this self-reflection tool,  
[available from Moodle here](#)

## Your Values

Look at the following factors and decide how important they are to you.

- In the **Free choice** column select all the values that are important or desirable to you.
- In the **Half** column cut the number of values you have chosen by half discarding those of lesser importance.
- For the final column choose only your **Top three** essential values.

	Free choice	Half	Top three
<b>Organisation</b> — Working in a well-known Organisation			
<b>Community</b> — Working in a place where you can get involved in the local community			
<b>Physical challenge</b> — Work that is physically demanding			
<b>Flexible working</b> — A role in which there is the possibility of working part-time			
<b>Job security</b> — Knowing that your work will always be there for you			
<b>Being expert</b> — Being known as someone with special knowledge or skills			
<b>Research</b> — Having the opportunity to carry out research			
<b>Supervision</b> — Having responsibility for supervising others			
<b>Learning</b> — A rapidly changing role in which you will continually be learning new things			
<b>Types of patients/clients</b> — Helping a particular patient or client group			
<b>Helping people</b> — A role in which you help individuals, groups or society in some way			
<b>Predictability</b> — Having a routine which is fairly predictable			

# What prompted you to do your current study?



Topic? Eg maternal, newborn and child health



Disease? Eg malaria

???

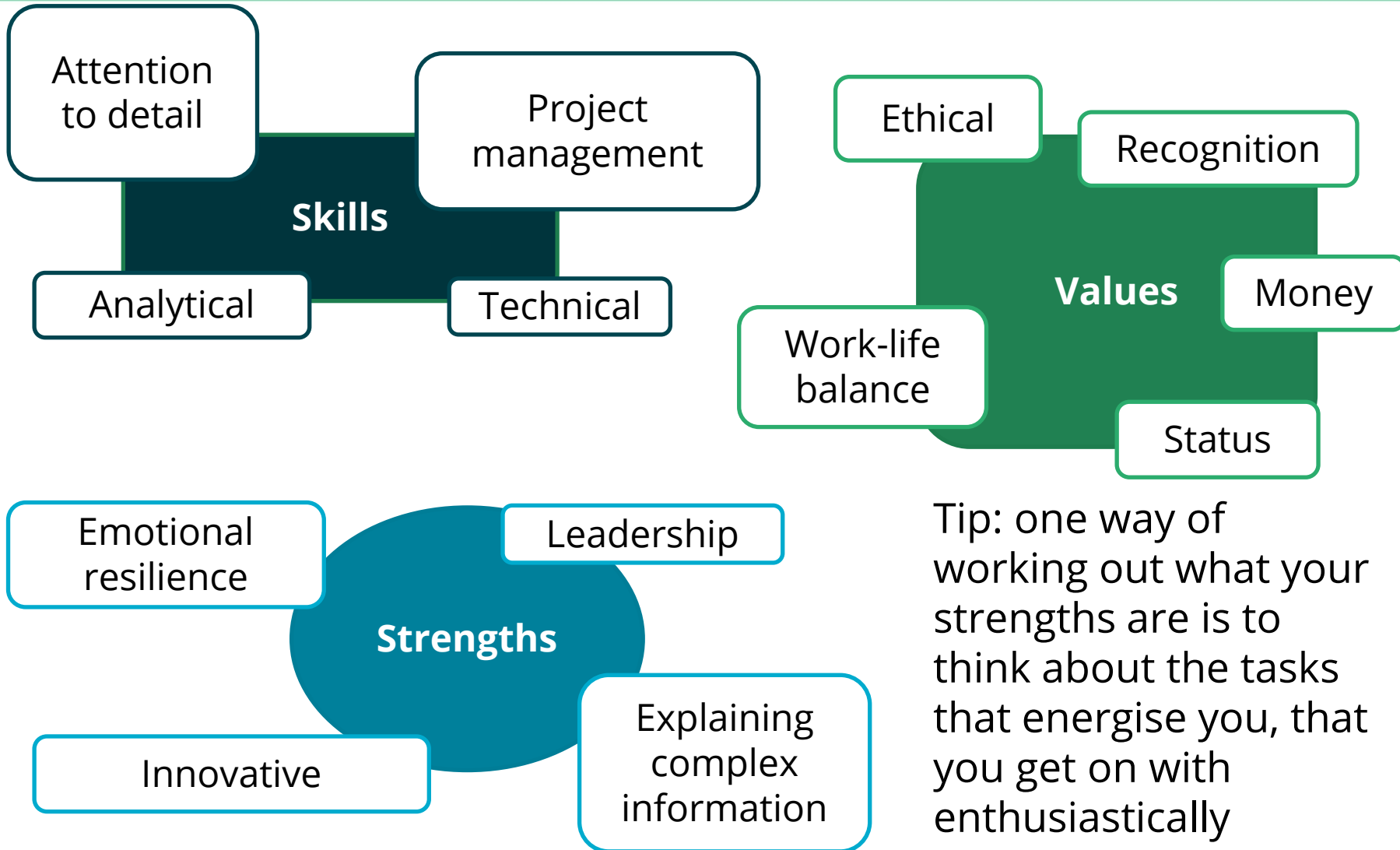


Expertise? Eg applied analytics





# Know yourself



# Know what's out there – types of work

Epidemiology  
Analysing data  
Logistics and supply chain management  
Fundraising  
Consultancy  
Lobbying  
Laboratory work  
Running clinical trials  
Researching new drugs  
Making Policy  
Health economics  
Running local projects  
Running national and international projects  
Monitoring and evaluating projects  
And Lots More!

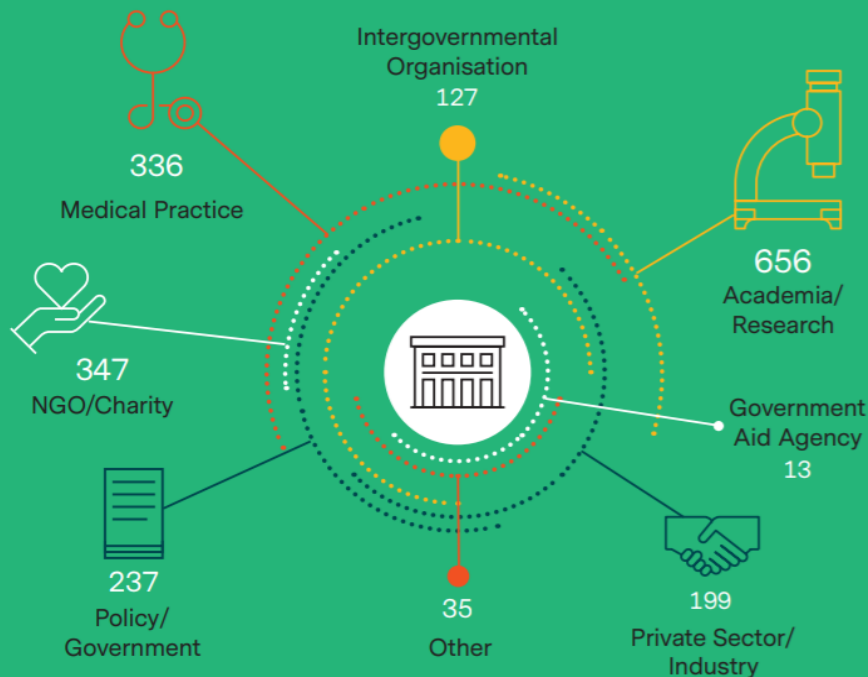
# Example job titles

Medical Officer Consultant  
Public Involvement Adviser  
Data Manager  
Public Health Consultant  
Research Scientist  
Research Assistant  
Environmental Health Officer  
Lead Engagement Manager  
Civil Servant  
Future Leaders Programme  
Head of Resource Mobilisation  
Project Manager  
HIV Consultant  
Biological Scientist

# What do LSHTM graduates do?

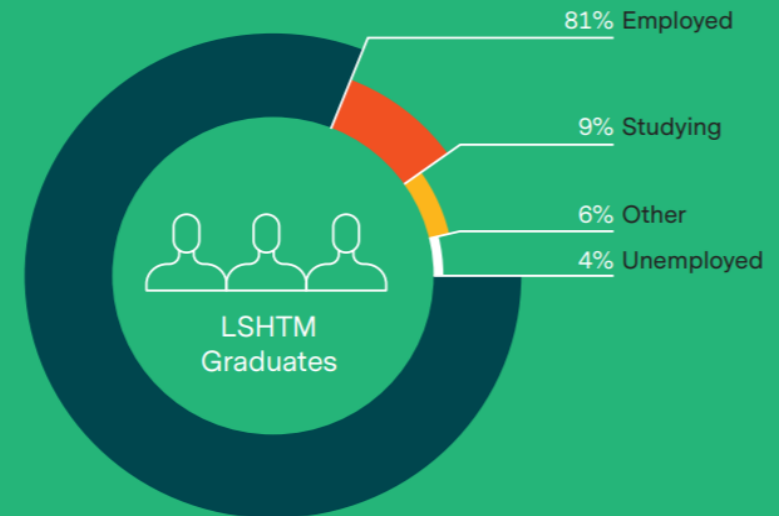
## Graduate Careers & Destinations

### Employment Sector



Source: LSHTM Alumni database 2011/12 - 2016/17, 1950 total respondents.

### Employability



Source: LSHTM DLHE survey data 2011/12 - 2015/16, 2380 total respondents.

# Who do they work for?

University?

Pharma?

Consultancy?

Government (Local/National)?

Think Tank?

International NGO?

Local NGO?

Supranational Organisation?

United Nations

NICE

Local Authority Public Health Department

Universities (in UK and elsewhere in the world)

WHO

CHAI

GSK

Civil Service

The Health Policy Partnership

Novartis

Public Health England

Hospitals (in UK and elsewhere in the world)

Action against Hunger

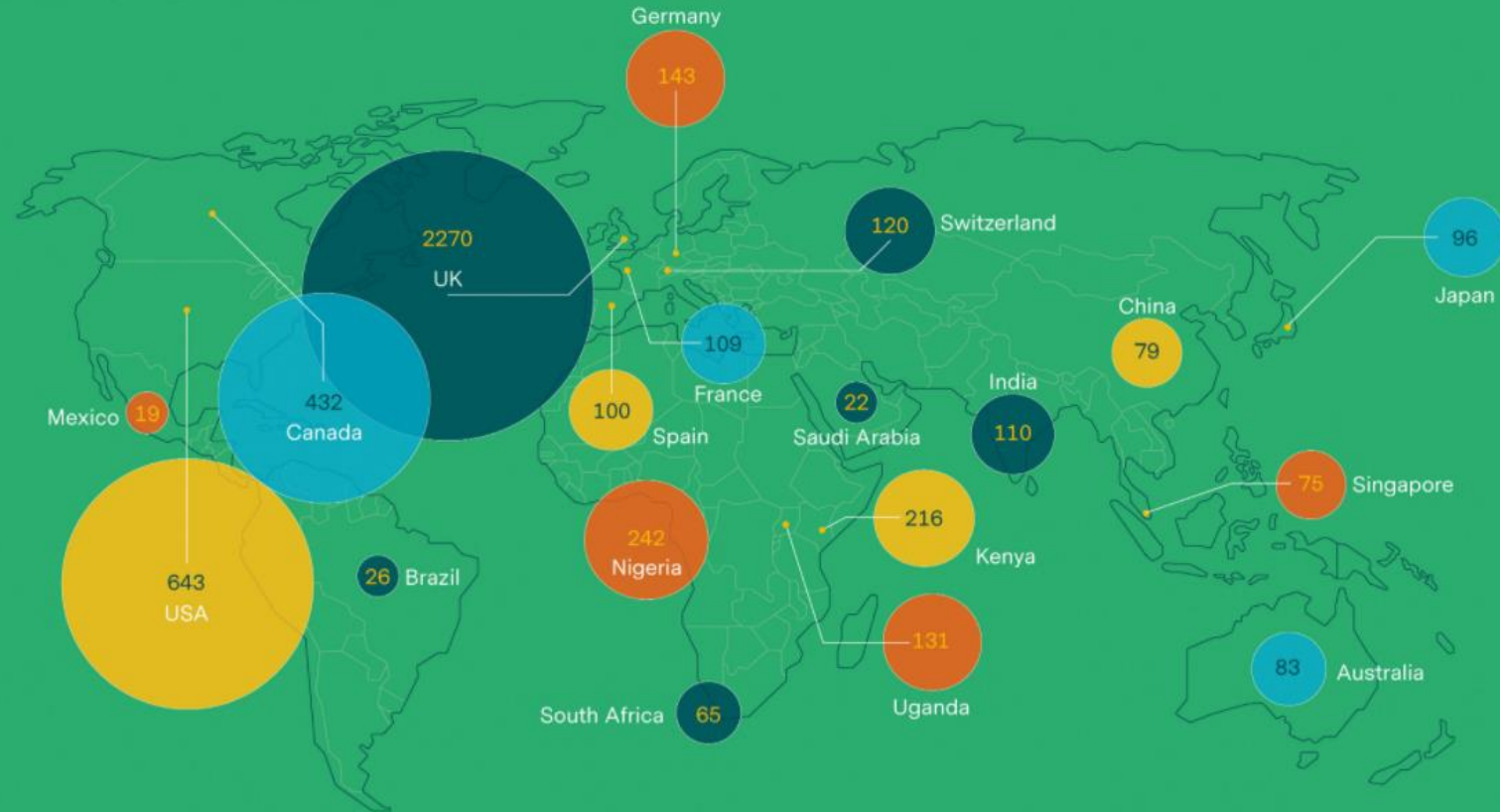
Tearfund

The Felix Project

# Where?

## Graduate Destinations

Source: LSHTM Alumni Database - 2011/12 - 2016/17.



UK	2270	Switzerland	120	Australia	83	Pakistan	51	Denmark	28	Thailand	21	Egypt	17	The Gambia	14
USA	643	India	110	China	79	Zambia	47	Zimbabwe	27	Trinidad & Tobago	21	Norway	17	Indonesia	14
Canada	432	France	109	Singapore	75	Belgium	42	Brazil	26	Ethiopia	21	Philippines	17	Colombia	13
Nigeria	242	Spain	100	South Africa	65	Malawi	40	Malaysia	26	Bangladesh	19	New Zealand	16	Mozambique	13
Kenya	216	Japan	96	Ghana	62	Greece	38	Republic of Korea	25	Mexico	19	Cyprus	16	Sierra Leone	11
Germany	143	Italy	88	Tanzania	52	Sweden	32	Austria	23	Portugal	19	Cameroon	15	Vietnam	11
Uganda	131	Ireland	83	Netherlands	51	Sudan	28	Saudi Arabia	22	UAE	17	Botswana	15		

# Find out more

## Example job titles:

Africa Regional Programme Analyst  
Assistant Professor  
Diabetes Quality Improvement Co-Ordinator  
Doctor  
Early Diagnosis Event Assistant  
Editorial Assistant  
Epidemiologist  
Immunisation Consultant  
Infection Control Nurse  
Infectious Disease Fellow  
International Programmes Volunteer  
Lecturer in Medicine Sciences  
Malaria Data Analyst  
Physician  
Pre-Doctoral Fellow  
Programme Manager  
Project Co-Ordinator  
Project Manager  
Public Health Officer  
Public Relations Executive  
Relief Worker

## Example organisations:

Malaria Consortium  
Apotex  
Basel University Hospital  
Bernhard Nocht Institute for Tropical Medicine  
Brooks  
Cancer Research UK  
Center for Disease Dynamics, Economics & Policy (CDDEP)  
Centre de Recerca en Salut Internacional de Barcelona (CRESI)  
Chesterfield Royal Hospital (NHS)  
City and Islington College  
CREMA  
DeltaQuest Foundation  
Doctors Without Borders  
Doula General Hospital  
eHealth Africa  
GOAL  
Health Poverty Action  
Health Protection Agency

Example CID destinations

[https://www.lshtm.ac.uk/sites/default/files/2017-03/graduate\\_destinations\\_2016.pdf](https://www.lshtm.ac.uk/sites/default/files/2017-03/graduate_destinations_2016.pdf)

# Find out more (cont'd)



Find alumni and check what they did before. Is their situation similar to yours?  
Are they doing work that interests you?

A screenshot of the LinkedIn alumni search interface for the London School of Hygiene and Tropical Medicine. The page shows the school's profile, a search bar for alumni, and two bar charts: 'Where they live' and 'Where they work'.

**London School of Hygiene and Tropical Medicine**  
London · 16,769+ alumni · 57,576 followers  
Improving health worldwide  
[Visit website](#)

16,769 alumni

Start year: 1900 | End year: 2020

Search alumni by title, keyword or company

< Previous | Next >

Where they live	+ Add
6,246   United Kingdom	<div style="width: 100%;"></div>
3,048   London, United Kingdom	<div style="width: 50%;"></div>
1,981   United States	<div style="width: 30%;"></div>
757   Canada	<div style="width: 15%;"></div>

Where they work	+ Add
676   London School of Hygiene and Tropical Medicin...	<div style="width: 100%;"></div>
397   World Health Organization	<div style="width: 60%;"></div>
300   NHS	<div style="width: 50%;"></div>
239   Public Health England	<div style="width: 40%;"></div>



# Screenshot of alumni on LinkedIn



- Home
- About
- Jobs
- Alumni**
- Videos

404 alumni

Start year

End year

Public Health ×

London, United Kingdom ×

epidemiology ×

Clear all

[< Previous](#) [Next >](#)

## Where they live + Add

783 | United Kingdom

404 | London, United Kingdom

278 | United States

## Where they work + Add

63 | London School of Hygiene and Tropical Medicine,...

31 | Public Health England

20 | UCL

Show more ∨



## If you had to split Public Health into a few main headings, what would they be?

**Health Improvement** – This mainly involves the impact on people's lifestyles, such as smoking reduction, engaging in safer sexual behaviour or healthy eating and exercise.

**Health Protection** – This involves areas such as control of infectious diseases, vaccination programmes, food safety and protecting against various environmental hazards.

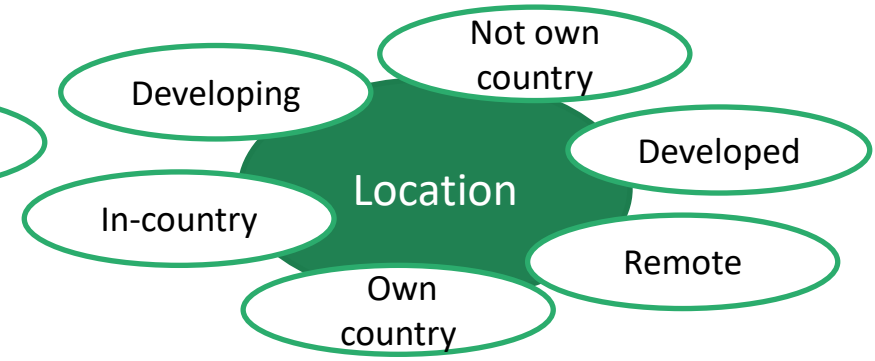
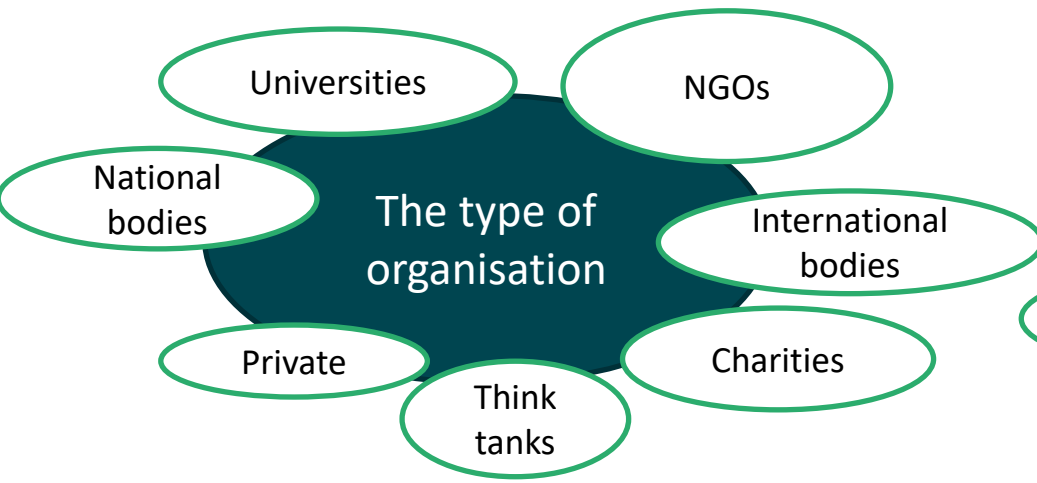
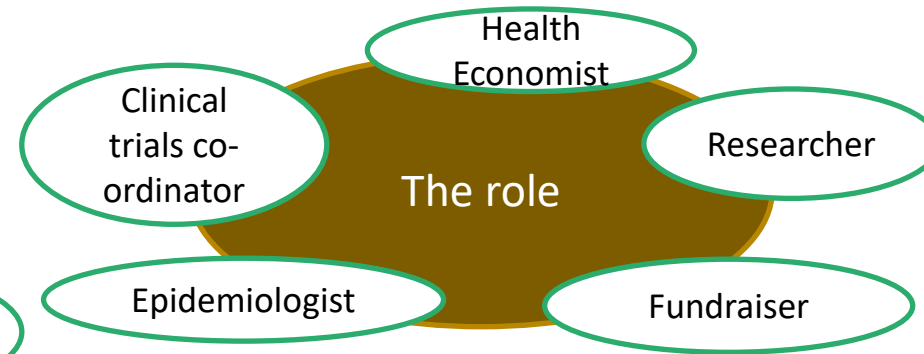
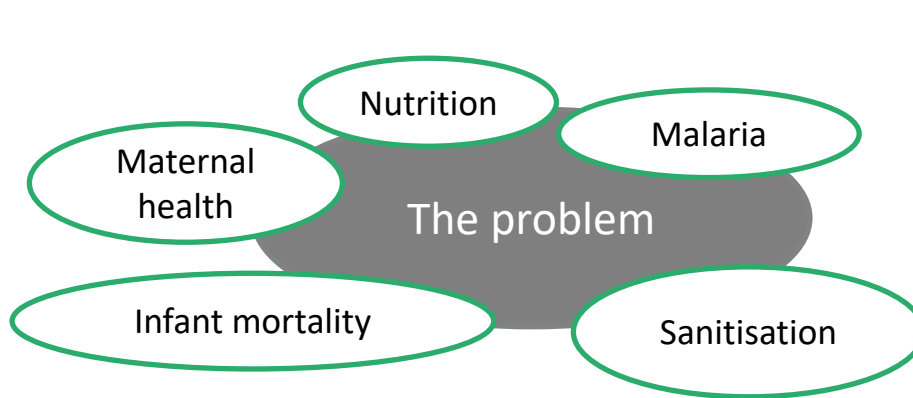
**Academic Public Health** – Conducting research into various areas of public health and/or teaching about public health.

**Health and Social Care Quality** – Investigating and improving the quality and standards of services which impact health.

**Strategy and Policy** – Creating policies, implementing them and measuring their impact.

**Public Health Intelligence** – The collection and analysis of data to impact the health of particular groups or the population as a whole.

# Think about your focus



# Test out your ideas

Share current ideas about possible next steps in the chat box.

Could you offer each other suggestions for finding out more, to help test your ideas?



# Test out your ideas (contd)

Conversations – alumni, academics, each other –  
student-led seminars

Internships (many unadvertised)

Volunteering

Summer Project

Part-time Work

Consulting

Full-time job

# Successful job hunting



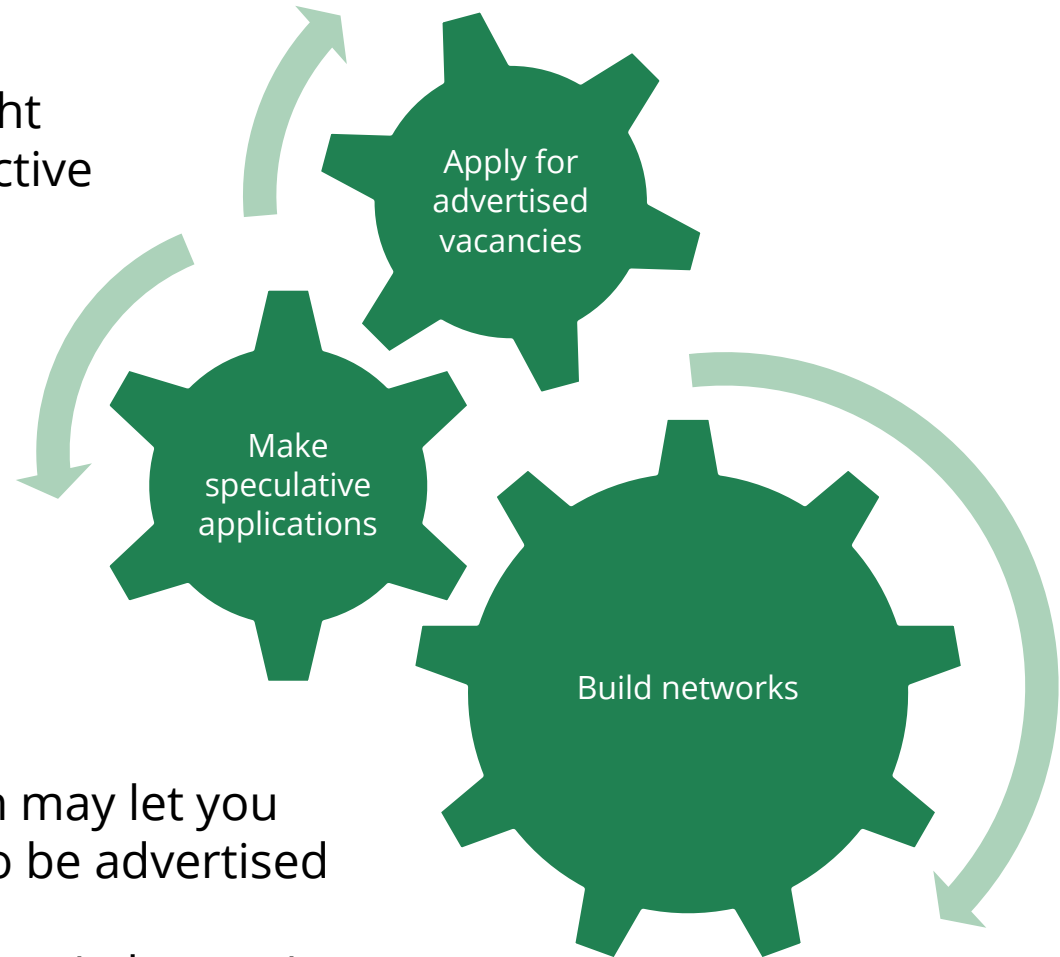
Speaking to someone in an organisation will give you insight that will help you write an effective application for an advertised vacancy

Speaking to someone in an organisation can help you find someone to send a speculative application to and also give you insight which will help you shape that application

A contact in an organisation may let you know when a job is about to be advertised

A contact may put in a word for you (advocacy)

A contact may be able to offer you work



“With graduation around the corner, I thought I should write you a careers update. I had an email through from the organisation I did my dissertation for at the beginning of the year to say that they were putting in a bid for a project and if successful they would need someone to coordinate it. Would I be interested? Of course, I said "yes" as it ticked many boxes (part-time, nice working environment and an interesting role). I started at the beginning of the month and this position should run until Sep. It's challenging and the learning curve is huge! However, I feel very grateful to have this opportunity and the chance to get paid while I gain experience.”

LONDON  
SCHOOL of  
HYGIENE  
& TROPICAL  
MEDICINE



(e-mail from a previous graduate)

Being flexible, not rigid

Spotting opportunities

Trying things out and seeing what happens

Talking to people about your interests

Finding out about others

Finding solutions to problems

Taking risks

Reflecting and learning from experiences



Abandon the idea that you have to 'get it right'

Take your best guess and go for it

Don't view it as failure or a disaster if you don't like it

Learn from it and move on

Consider...is it a useful next step?

# Finding advertised opportunities

## Moodle

LSHTM Job Online:

<https://ble.lshtm.ac.uk/course/view.php?id=1070&section=8> (job feed at right of page)

LSHTM Careers Facebook page:

<https://www.facebook.com/groups/1522737831138994/> (students and alumni post jobs)

Finding and applying for jobs/further study – Where to find public health jobs - <https://ble.lshtm.ac.uk/mod/page/view.php?id=105280>

Events – Missed an Event – Slides and resources from workshops by careers consultants

<https://ble.lshtm.ac.uk/mod/folder/view.php?id=104945>

# Did the session cover?

Aim: to equip you with reflective career decision-making tools

Objectives: by the end of the session you will be able to

- Identify priorities for your next step
- Evaluate possible career options in the light of those priorities
- Formulate a plan for one action as a next step

# We value your feedback

Please complete the feedback form – the link is in the chat box!

And now let's move to your questions.....

